

Foothills Research Institute and Partners

GIS Day - 2009



Learn about GIS

Drop by the library and learn how we use GIS to track grizzly bear use of the landscape, to map points of historical importance and interest, or to map all streams and tributaries in a watershed.



November 16, 2009

Teck Coal Room

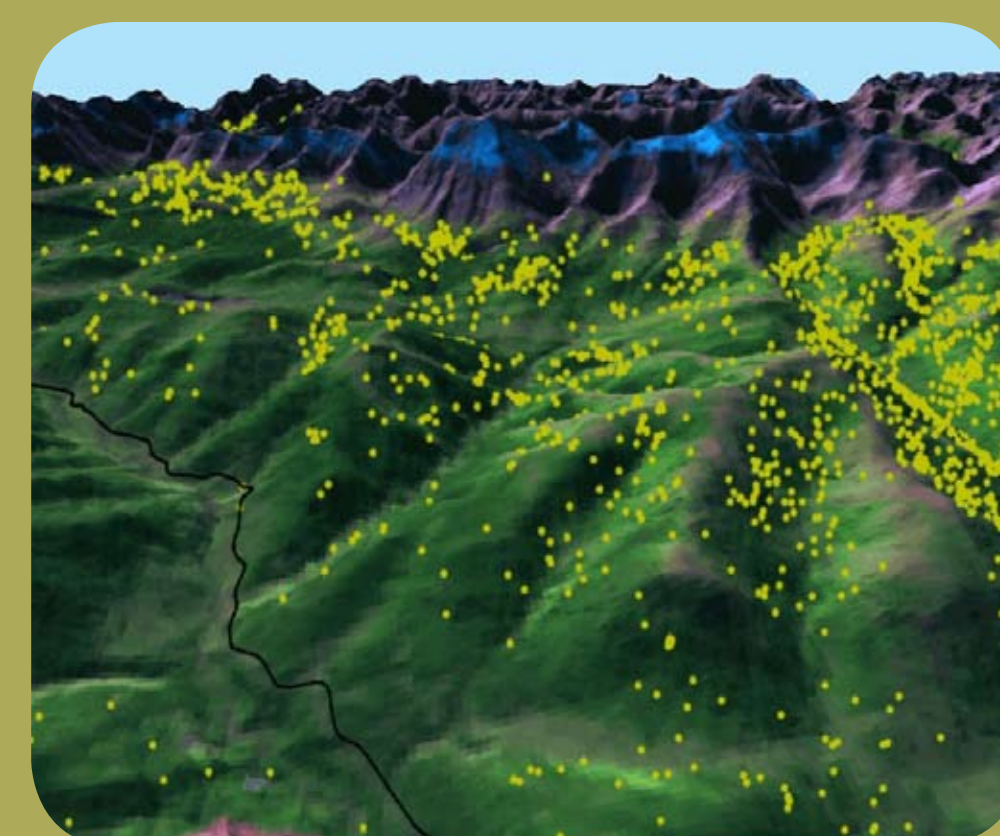
Hinton Public Library

803 Switzer Drive

12:00 p.m. - 8:00 p.m.

This presentation is free of charge and open to everyone.

GIS (Geographic Information Systems) is a computer system for capturing, storing, checking, integrating, manipulating, analysing and displaying data related to positions on the Earth's surface.



With GIS, you can explore the spatial element of your data to display soil types, analyze animal migration patterns, model the path of atmospheric pollution, and make decisions for many types of complicated problems.

We welcome inquiries: Box 6330 Hinton, Alberta Canada • T7V 1X6 •
T: 780.865.8330 • F: 780.865.8331 • foothillsresearchinstitute.ca

