

Foothills Landscape Management Forum (FLMF)

FRI AGM October 15, 2008

Prepared by W.Thorp

Presentation overview

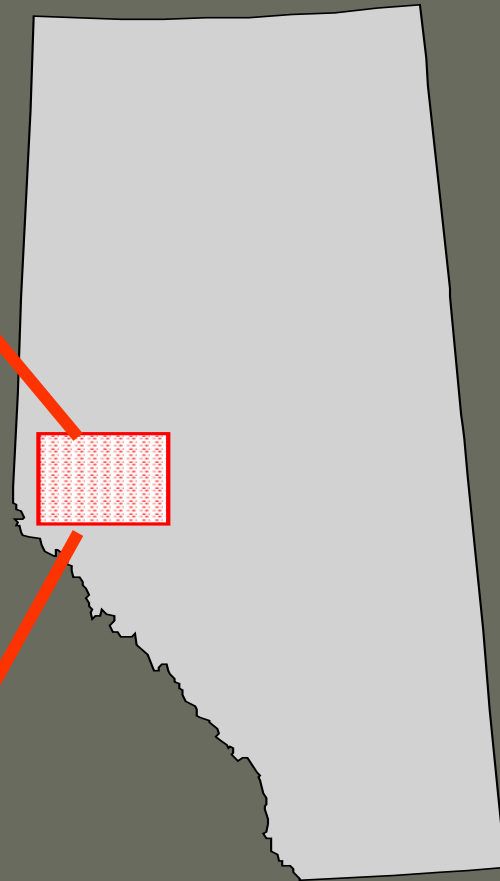
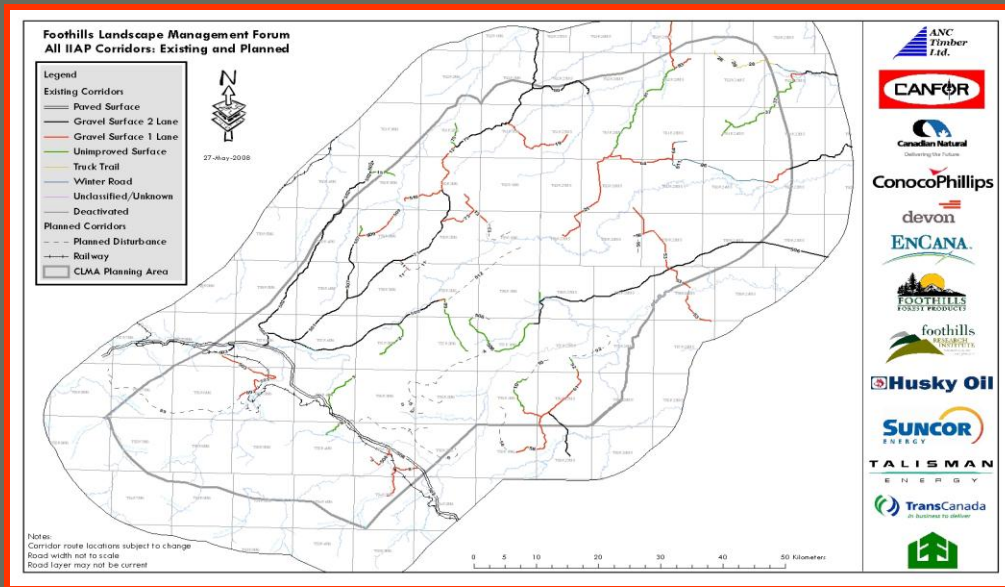
- FLMF overview
- FLMF Accomplishments 2005- 2008
- FLMF work plan for the next year
- Values of FLMF

Overview of FLMF

- Self funded by a volunteer group of companies:

Alberta News Print, Hinton Wood Products, Canfor, Foothills Forest Products, Shell, TransCanada Pipelines, Suncor, Encana, Talisman, ConocoPhillips, Devon, Canadian Natural Resources, & Husky.

FLMF general geographic area



FLMF Accomplishments

ILM:

Industry working together

- Integrated Industry Access Plan
- Lineal vegetation inventory pilot program
- Data sharing and management
- Practices review
- Communications

Industry working with government

- Funded caribou penning program
- Industry input to West Central Caribou - Landscape Plan (expanded area and company involvement)
- Adaptive Management Plan Implementation

FLMF work plan for 2008-2009

“Development of a proactive industrial and government approach for management of industrial footprint and vegetation dynamics over time and space to reduce impacts on other values”:

Current practises for Reduction of Footprint in Critical areas



Low impact seismic (Mulching)



Matting (temporary equiv. to frozen access)

Vegetation recovery (time and space)



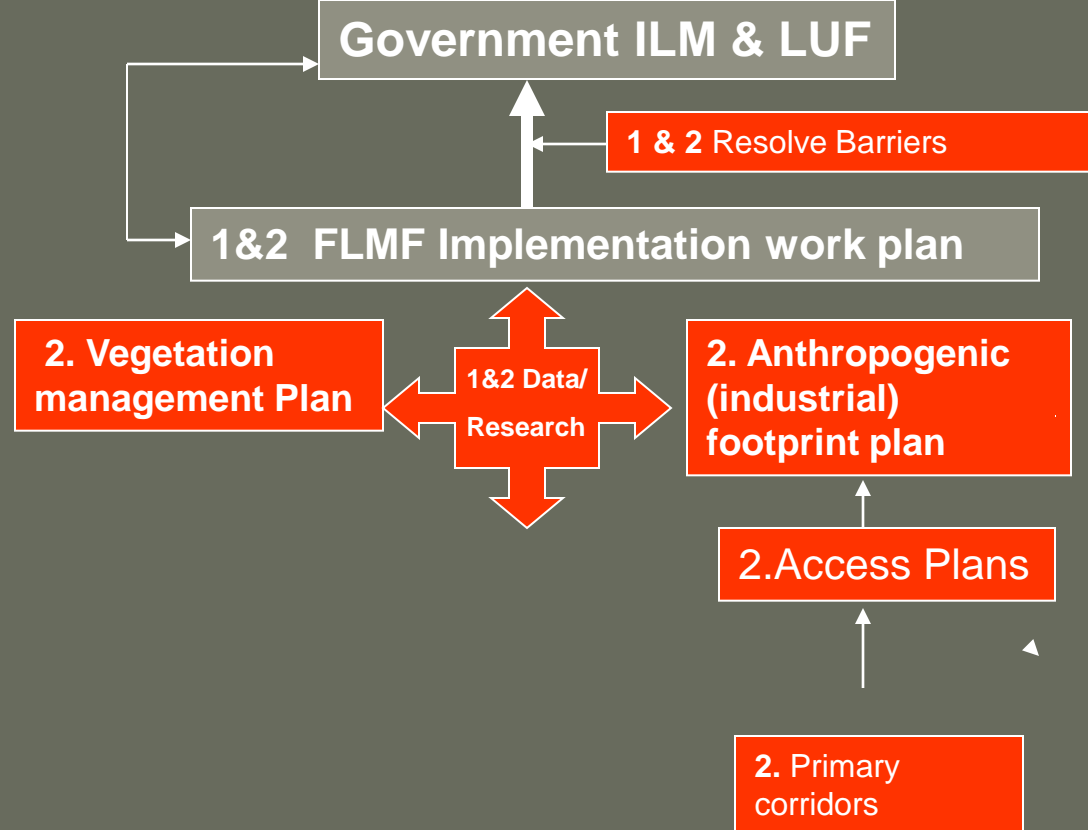
FLMF objectives for 2008/09+

FLMF 2008/09 work plan objectives:

1. Provide and enhance business value to its members
2. Improve provincial Integrated Land Management (ILM)
3. Improve on the Berland Smoky Access Plans (IIAP) annually through monitoring reports and maintaining an up to date inventory
4. Provide support for the Kakwa Copton Access Plan
5. Develop an adaptive management implementation plan for the West Central Caribou plan including the development of case studies
6. Develop an Access Management Research program area
7. Technology transfer and communication
8. Support and coordination of the Hinton Wood Products FMA ILM Plan
9. Grizzly Bear access layer assessment (cooperative with SRD)
10. Resolution of barriers that impede the successful delivery of ILM.

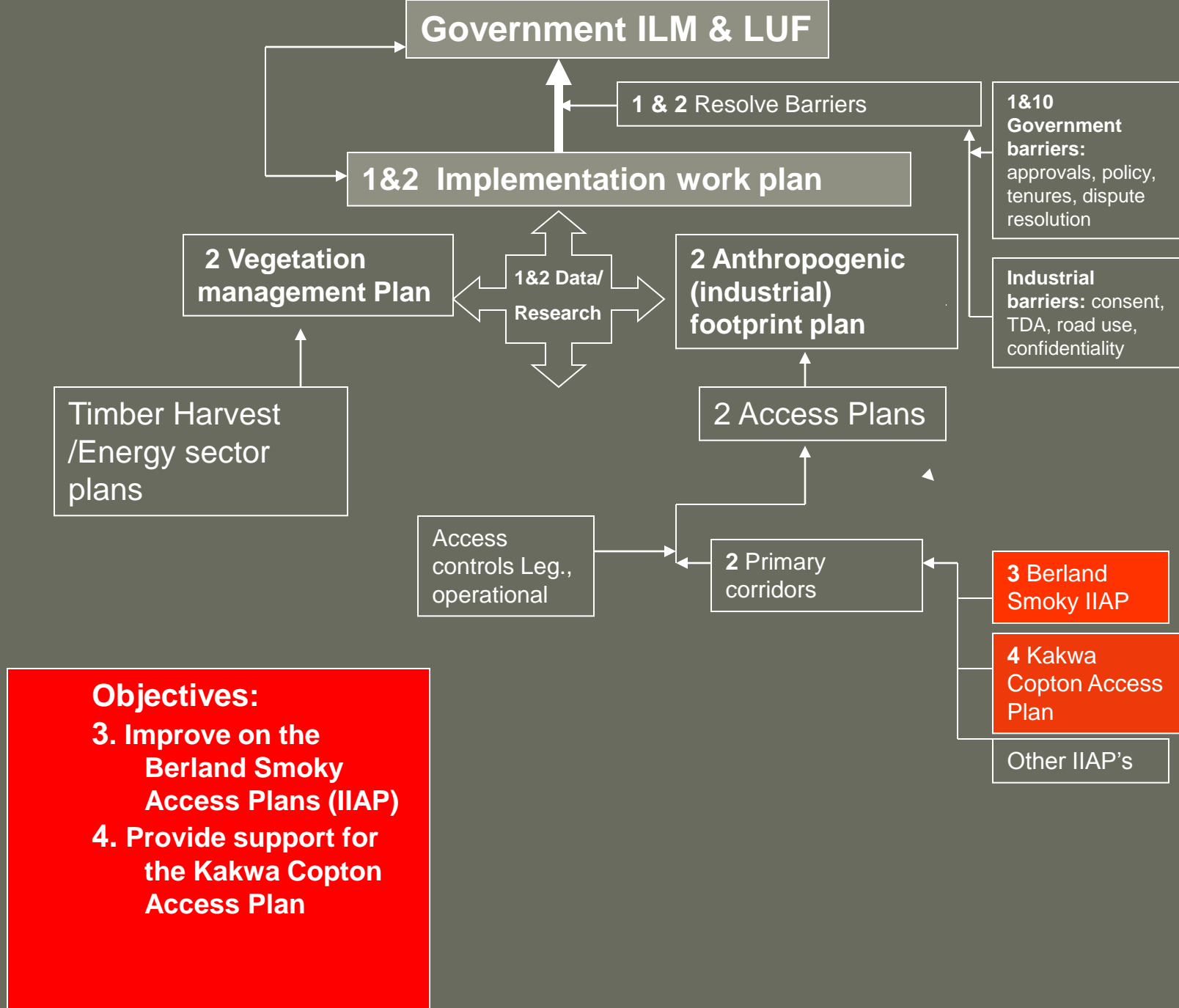
How it all fits together!

The FLMF work on management of industrial footprint and vegetation must support higher order plans such as Integrated Land Management & Land Use Framework



Objectives:

1. Provide and enhance business value to its members
2. Improve provincial Integrated Land Management (ILM)



Government ILM & LUF

1 & 2 Resolve Barriers

1&10 Government barriers:
approvals, policy, tenures, dispute resolution

1&2 Implementation work plan

2 Vegetation management Plan

1&2 Data/Research

2 Anthropogenic (industrial) footprint plan

Industrial barriers: consent, TDA, road use, confidentiality

Timber Harvest /Energy sector plans

2 Access Plans

Access controls Leg., operational

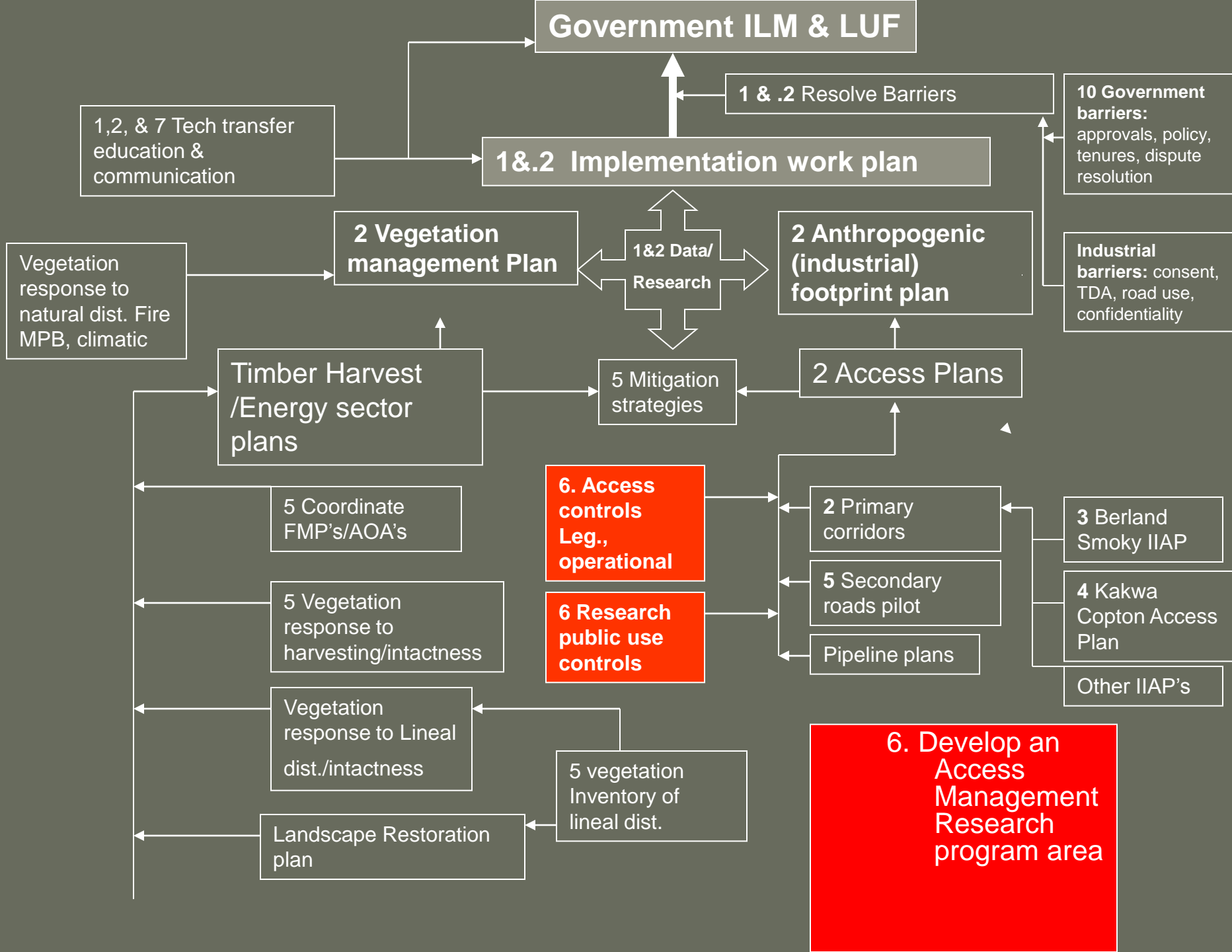
2 Primary corridors

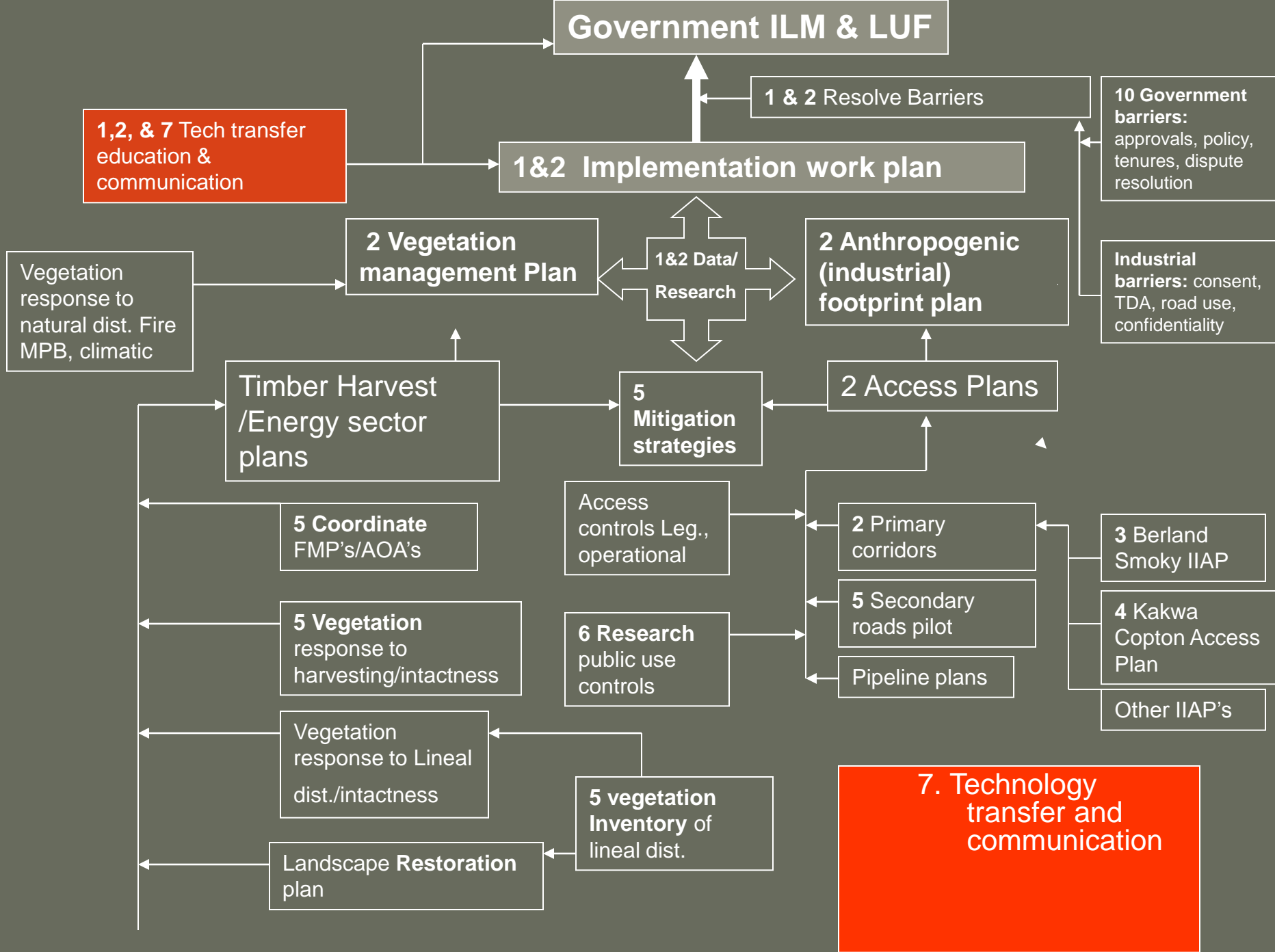
3 Berland Smoky IIAP

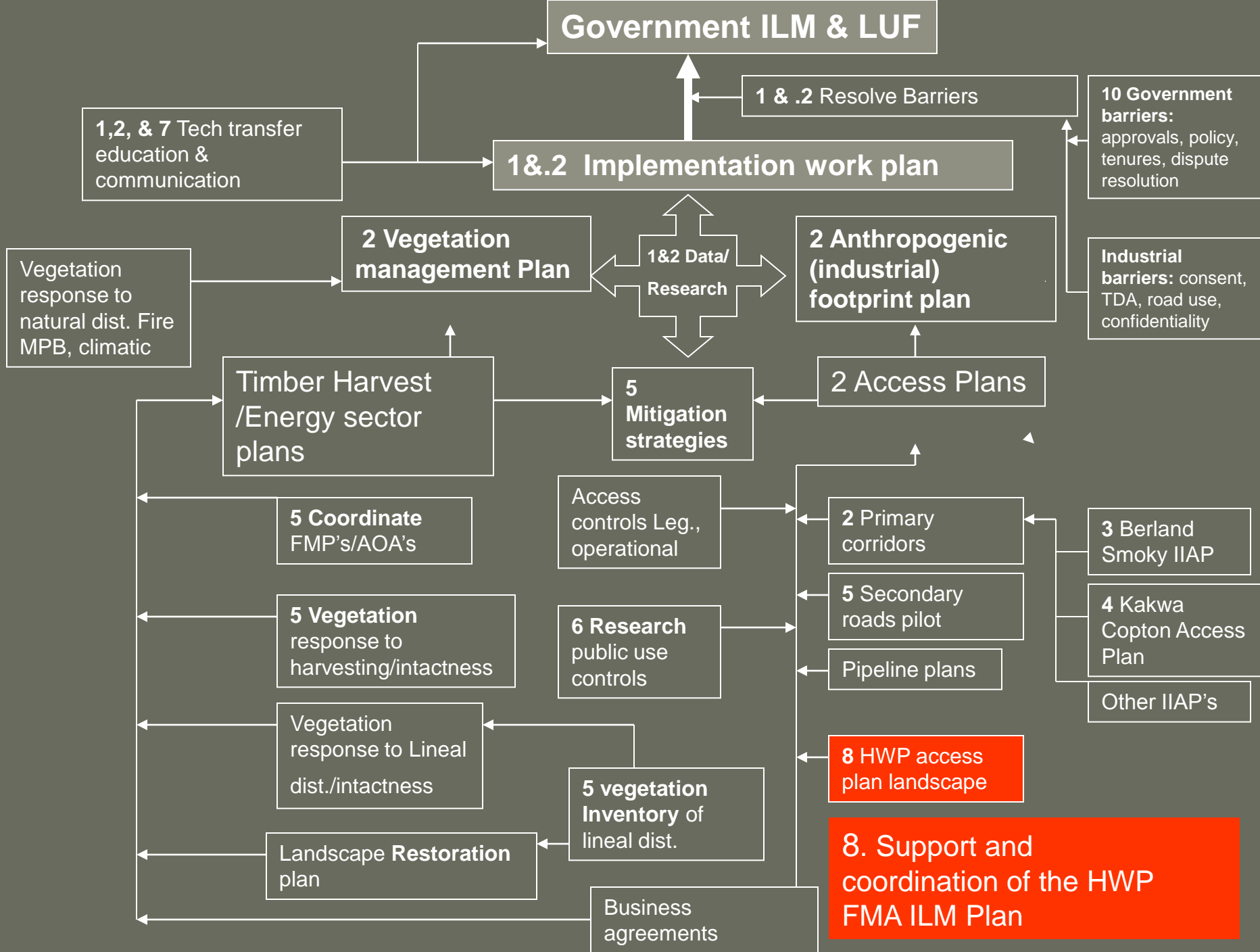
4 Kakwa Copton Access Plan

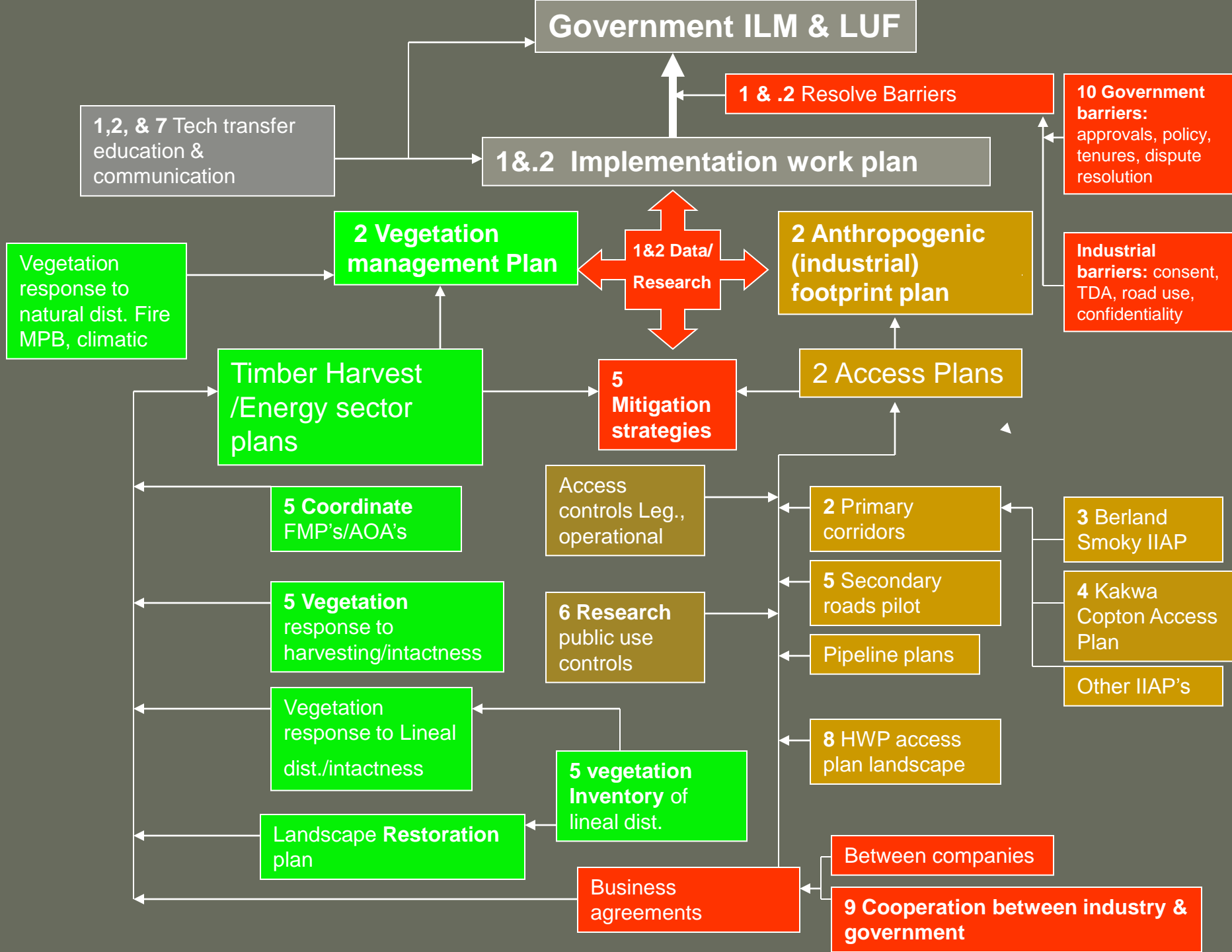
Other IIAP's

Objectives:
3. Improve on the Berland Smoky Access Plans (IIAP)
4. Provide support for the Kakwa Copton Access Plan









Value of FLMF

- Provides a forum for both sectors of industry to work on solutions for common issues with government.
- Provision of an up to date inventory of anthropogenic footprint in one place.
- Manages research and applies it
- Coordinates and facilitates implementation.
- Builds relationships & communications

END