



Mountain Pine Beetle Ecology Program FRI

March 26, 2010



MPBEP Team Members

Don Podlubny	Program Lead	Tammy Powell	Rep for GAER
Bob Udell	FG&YA	Tom Archibald	FRI
Dennis Quintilio	Fire Specialist	Dan Lux	ASRD
Joyce Gould	TPR&C	John Stadt	ASRD
Kyle Clifford	TPR&C	Sean Kinney	FRI C&E
Richard Briand	West Fraser Mills Ltd.		
Pat Wearmouth	Weyerhaeuser Company		
Steve Otway	Jasper National Park		
Steve Bradbury	Wildlife ASRD		
George Hamilton	Wild life ASRD		



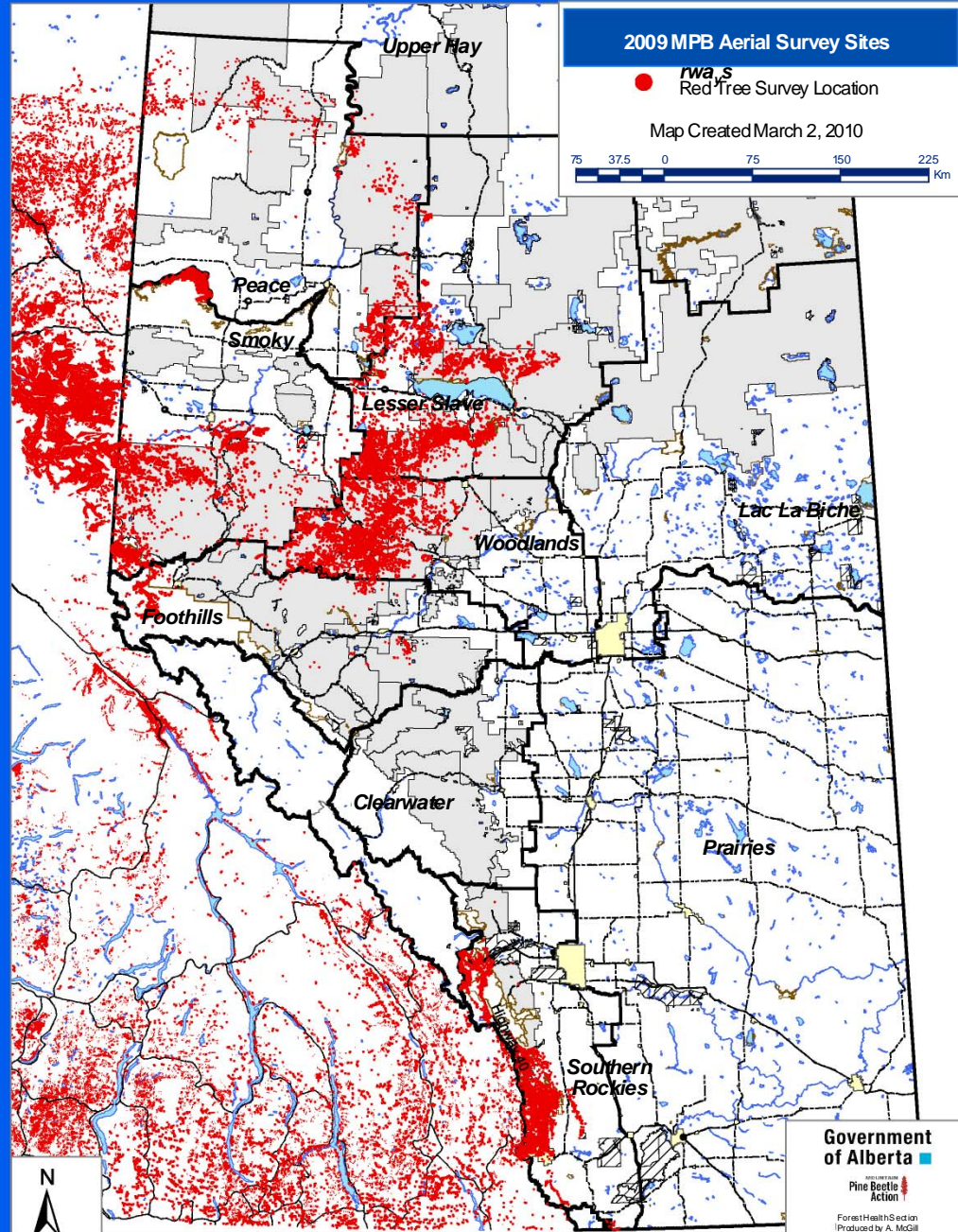


Natural Resources
Canada

Ressources naturelles
Canada



Alberta MPB Sites



MPBEP Work shop Purpose

The purpose of this workshop is to present the current status of all projects supported by the Mountain Pine Beetle Ecology Program (MPBEP) to the Activity Team and Partners of the Foothills Research Institute. The proceedings will provide the opportunity for the Activity Team to evaluate progress, assess new project options, and obtain feed back from researchers and resource management partners. Discussion and feedback will be used to confirm program direction and indentify future opportunities and management challenges.



MPBEP Agenda

9:00 Welcome and introduction to the work shop Don Podlubny

9:15 Alberta Mountain Pine Beetle status Daniel Lux
ASRD

Monitoring and Decision Support for Regeneration Management in a Mountain Pine Beetle Environment

10:00 Break

10:15 Decision Support Tool Project over view Dr. W. R.
Dempster
Consultant

10:30 Decision Support Tool Development



MPBEP Agenda con't

Effects of simulated Mountain Pine Beetle attack on hydrology and vegetation responses in lodgepole pine forests in Alberta

1:00 Hydrology project

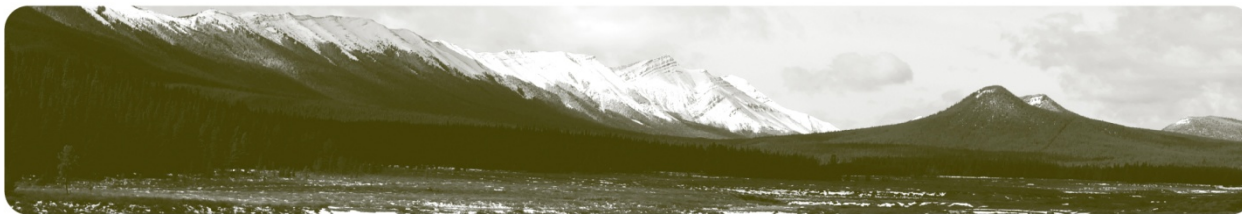
Dr. Uldis
Silins U of A

Pablo Pina
U of A

1:30 Post attack Vegetation Studies

Dr. Ellen
MacDonald U of A

Anne McIntosh U of A





MPBEP Agenda con't

Using Oblique Historical Photos to Determine Past Mountain Pine Beetle Susceptibility

2:00 Report on project work done to date Chris Stockdale
Burning EcoLogic

Does prescribed fire affect population dynamics of mountain pine beetle?

Evaluating population success and fitness on fire-injured trees

2:30 Project over view Dr. Nadir Erbilgin
U of A

2:45 Project work to date Crisia Tabacaru Phd
Candidate U of A

MPBEP Agenda con't

Implementation of STAARCH and the STARFM component (phenology)
over MPB/Grizzly Bear Study Area

15:00 – 15:30 Project Update

Karen Graham Grizzly Bear Researcher, FRI

15:30 – 16:00 Wrap up and Discussion of Potential Future Work

Don Podlubny, MPBEP Program Lead, FRI





A Partnership That Produces Results!

Don Podlubny donpod@telus.net
(780) 817-0200

